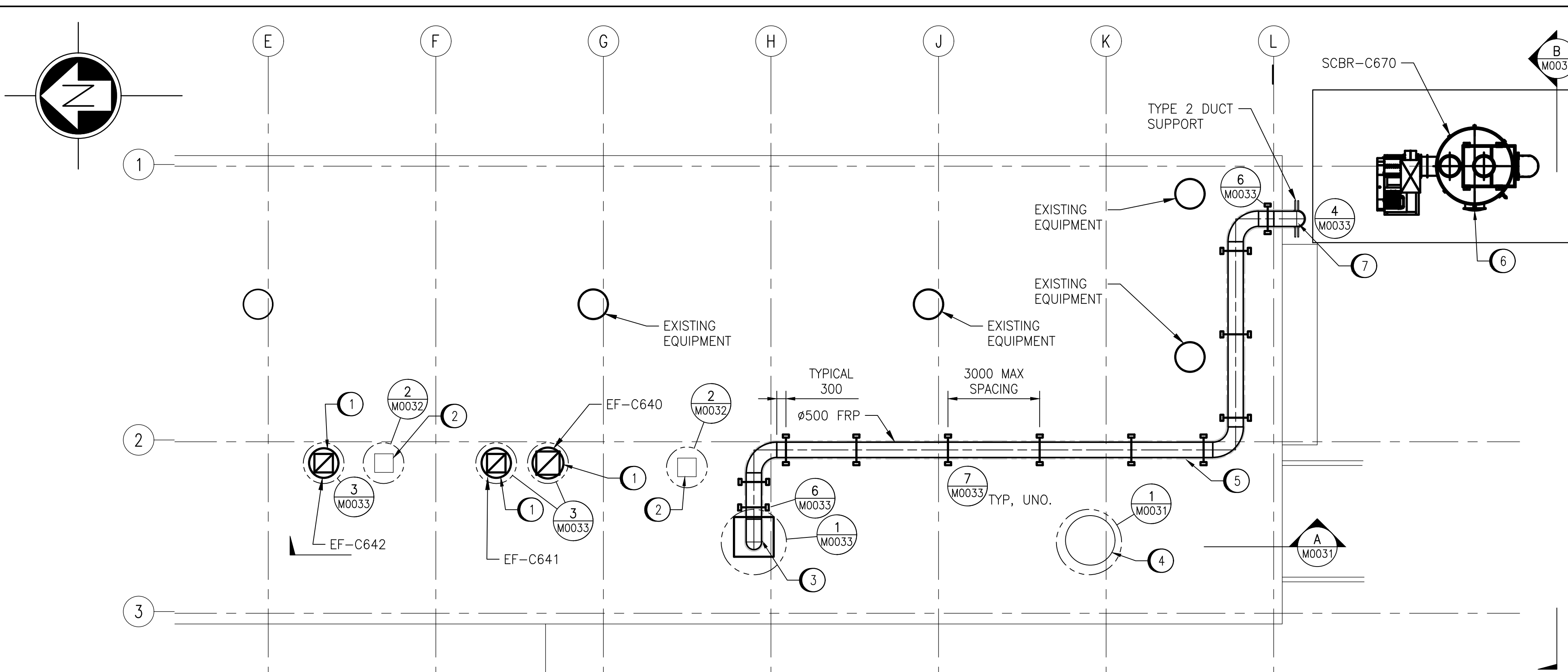
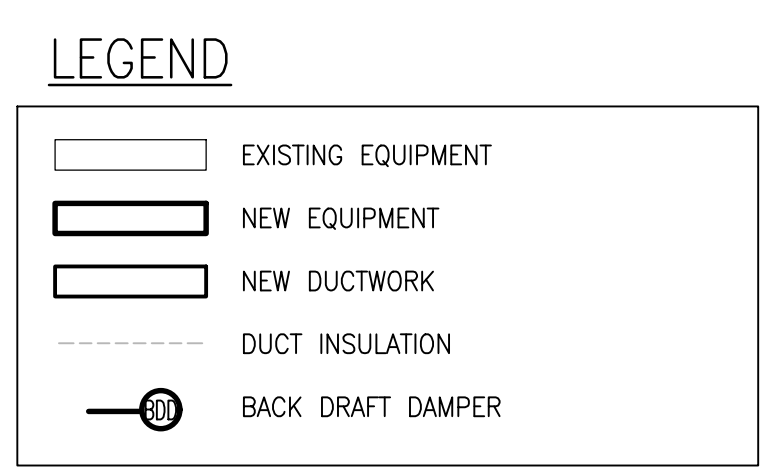


LAST SAVE: 2025/04/23 - 10:51am
PATH: \\WINPDC1.slbz\PROJ\694715\4ENG\45MEC\DD - General DWG\MacCLEAN\1-0630M-M00XX-001-PD.dwg
A1 SIZE - 594mm x 841mm

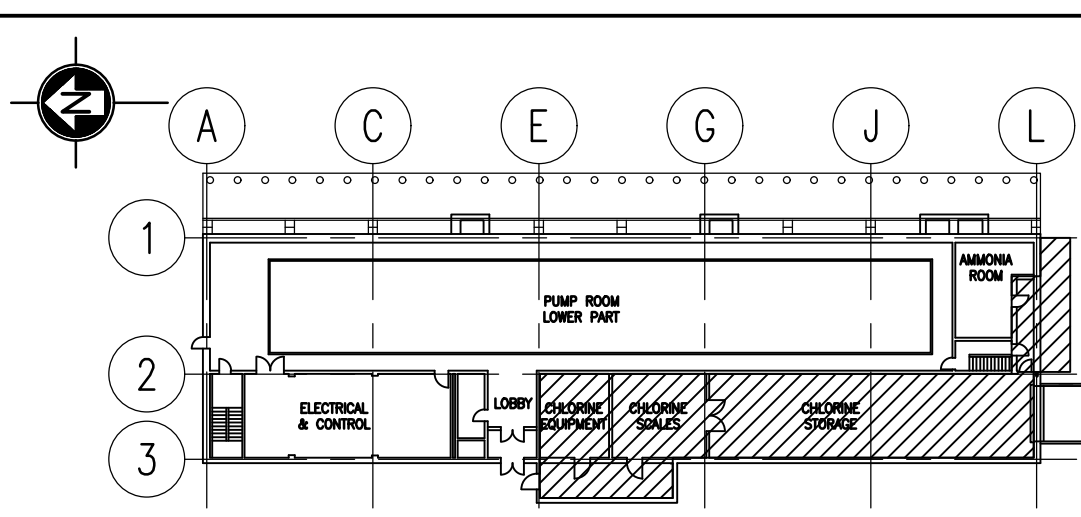
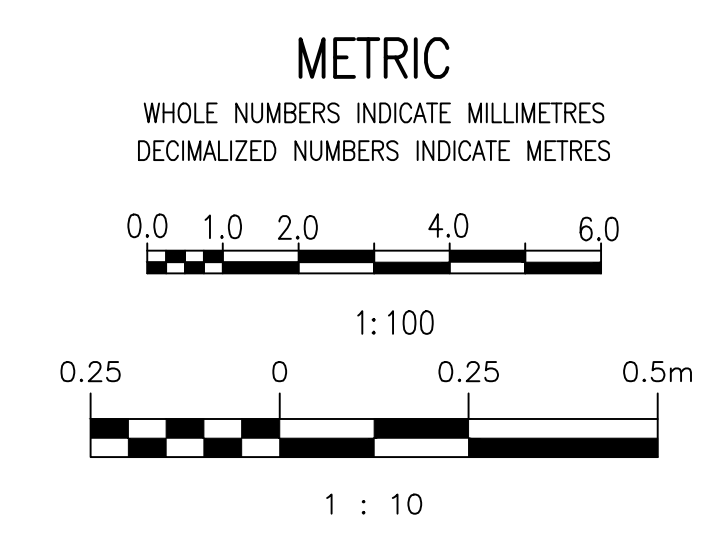


PARTIAL ROOF PLAN - NEW WORK
SCALE: 1:100



GENERAL NOTES

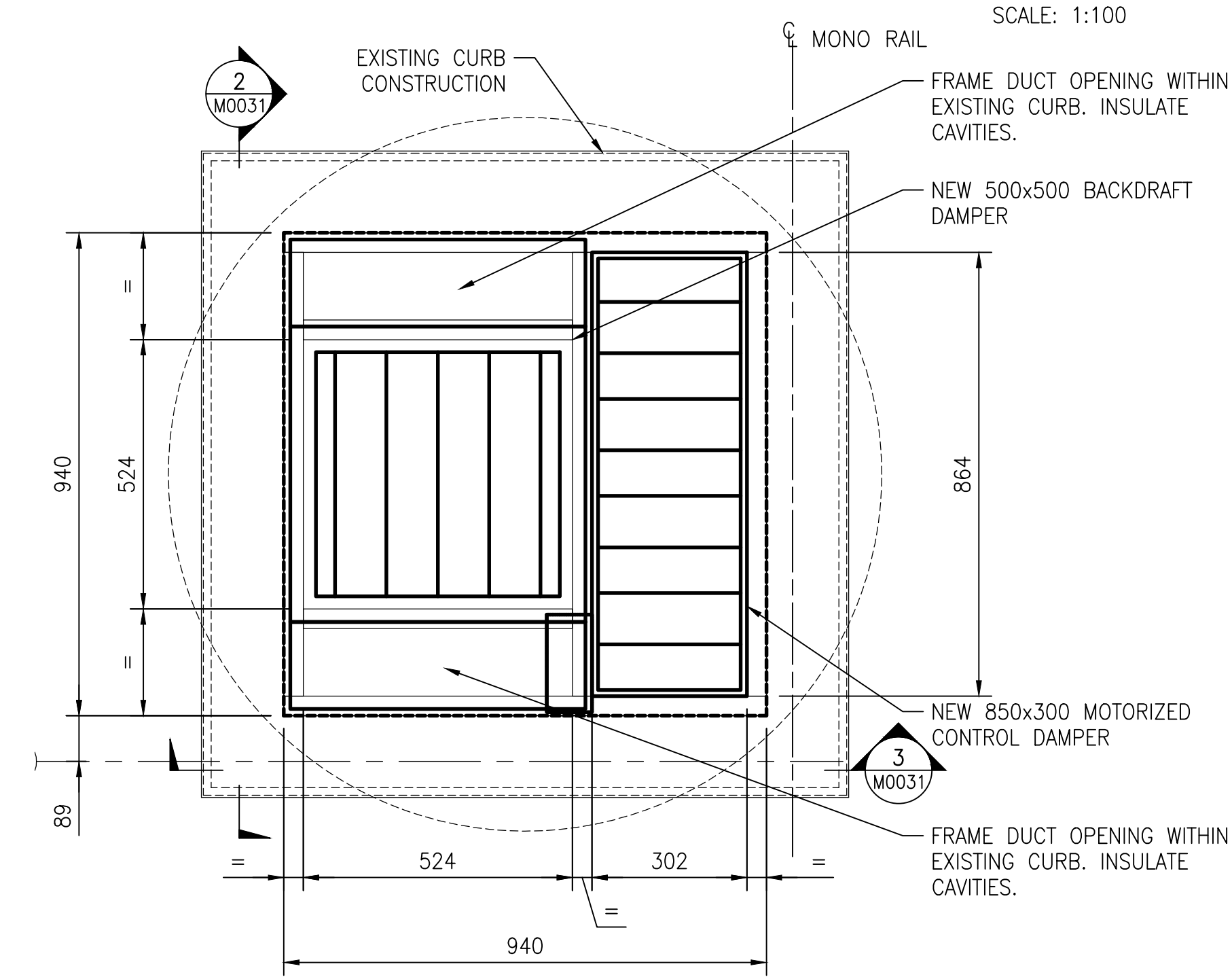
1. DRAWING INFORMATION BASED ON HISTORICAL DRAWING AND SITE INVESTIGATIONS.
2. INSULATION ON ALL EXISTING DOMESTIC WATER, FRESH AIR INTAKE, RAIN WATER LEADER, CONDENSATE AND DRAIN PIPE FITTINGS MAY CONTAIN ASBESTOS MATERIALS. REFER TO EXISTING ASBESTOS REPORTS TO CONFIRM.
3. MASONRY BLOCK WALLS, CEILING OR WALL HARD PLASTERS AND CERAMIC FLOOR TILES MAY CONTAIN ASBESTOS.



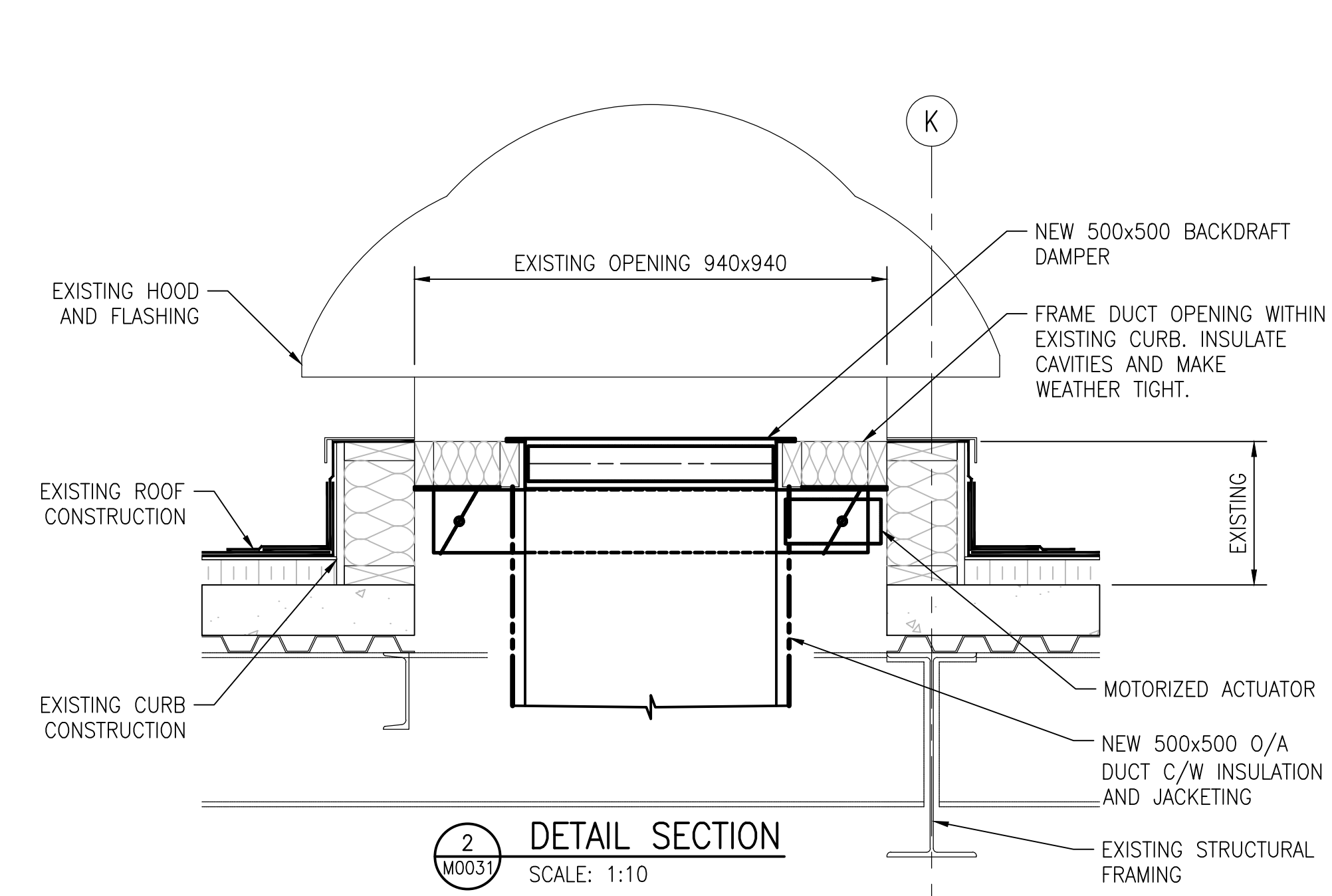
KEY PLAN
SCALE: 1:500

DRAWING NOTES

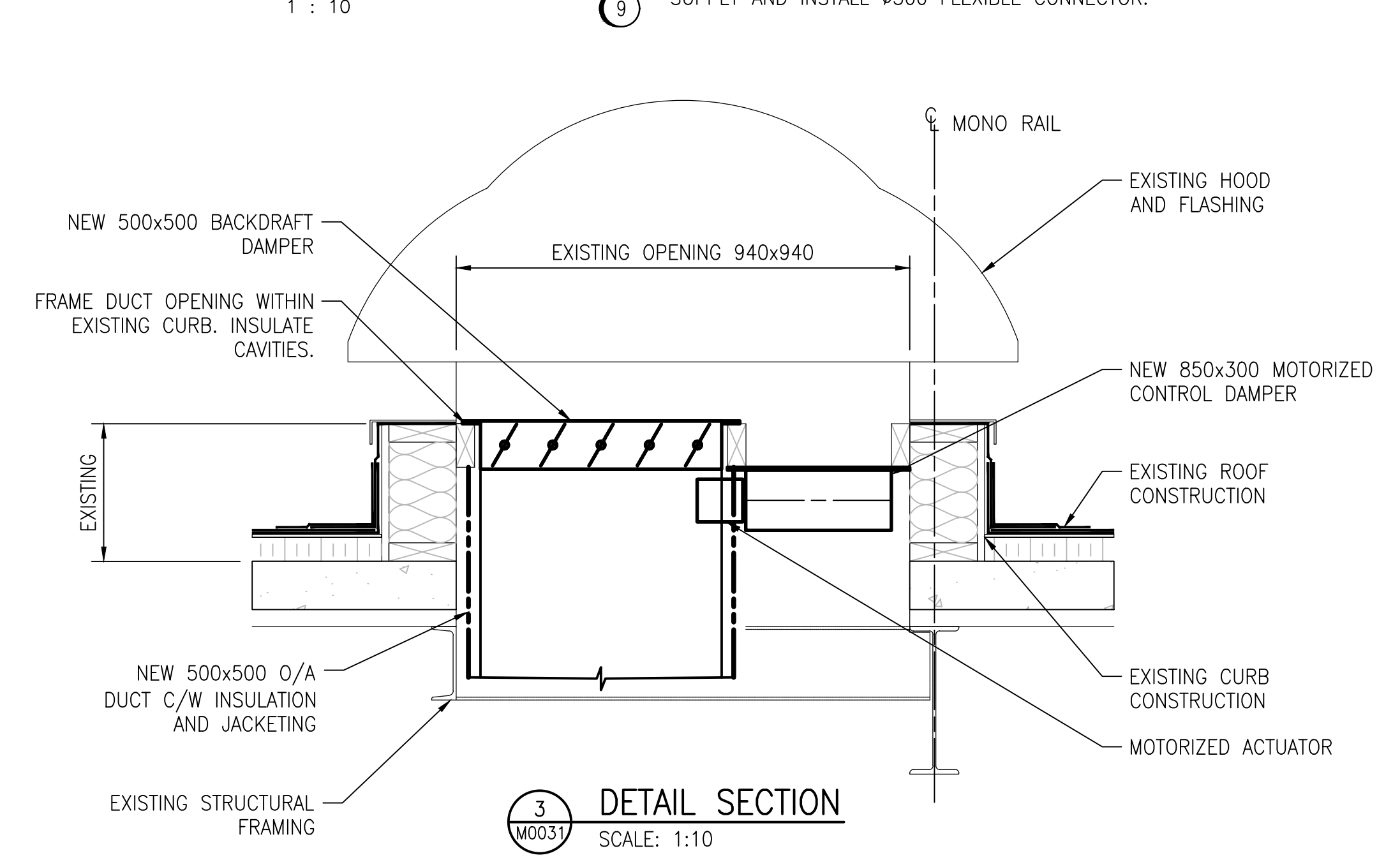
1. SUPPLY AND INSTALL NEW EXHAUST FAN C/W MOTORIZED DAMPER AND CURB ADAPTER SIZED TO SUIT EXISTING CONDITIONS AND NEW FAN. COORDINATE WITH ELECTRICAL. REFER TO DETAIL 3/M0033.
2. FLASH AND MAKE WEATHER TIGHT EXISTING EQUIPMENT CURB. REFER TO DETAIL 2/M0032.
3. SUPPLY AND INSTALL NEW FRP CURB CAP C/W Ø500 FLANGED DUCT STUB. CONNECT TO Ø500 INSULATED FRP DUCT. REFER TO DETAIL 1/M0033.
4. REUSE EXISTING ROOF CAP. INSTALL TRANSITION FOR NEW DUCTWORK. REFER TO DETAIL 1/M0031.
5. SUPPLY AND INSTALL NEW Ø500 INSULATED FRP DUCT. SUPPORT DUCT AT 2000mm. REFER TO TYPE 1 SUPPORT DETAIL 7/M0033.
6. INSTALL SCRUBBER, SCBR-C670, ON NEW CONCRETE PAD. COORDINATE WITH STRUCTURAL AND ELECTRICAL.
7. SUPPLY AND INSTALL NEW TYPE 3 DUCT SUPPORT TO EXTERIOR OF BUILDING. REFER TO DETAIL 4/M0033. COORDINATE WITH STRUCTURAL.
8. TRANSITION FROM Ø500 TO Ø600.
9. SUPPLY AND INSTALL Ø500 FLEXIBLE CONNECTOR.



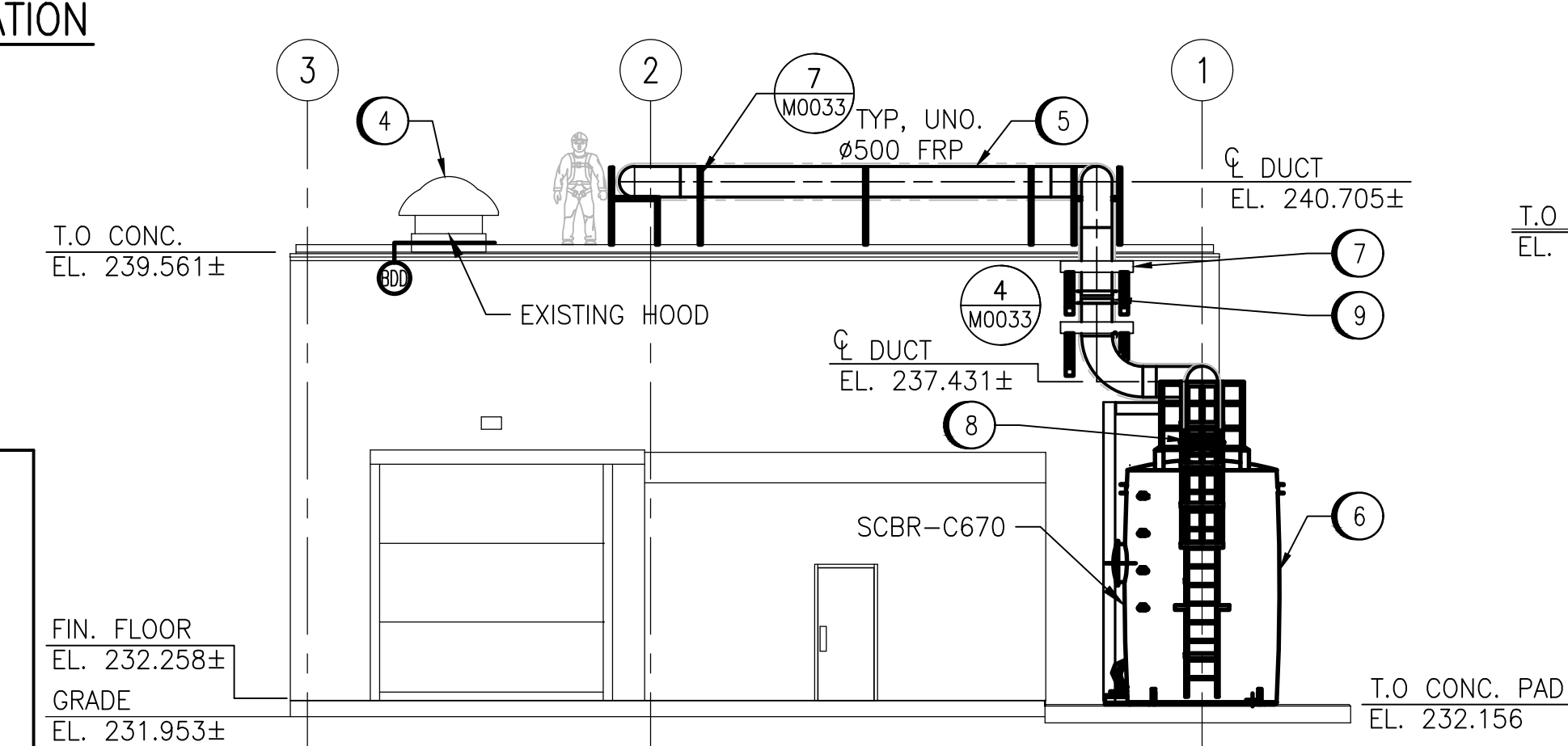
1 EXISTING HOOD MODIFICATION
SCALE: 1:10



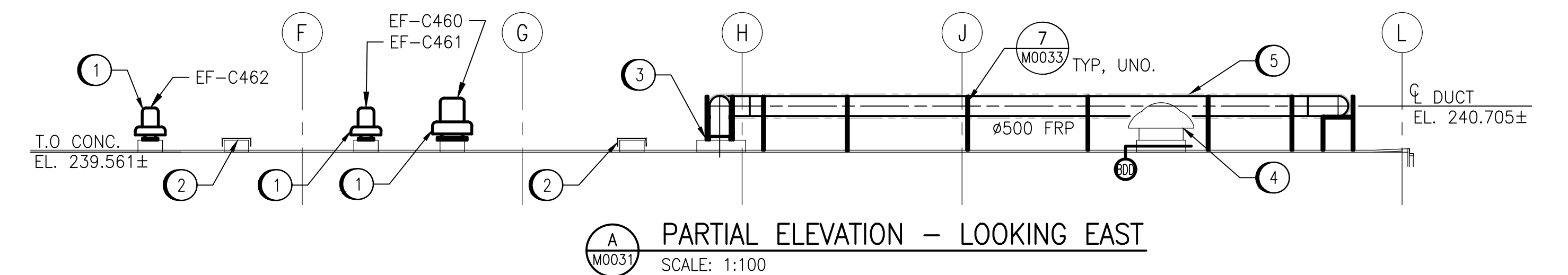
2 DETAIL SECTION
SCALE: 1:10



3 DETAIL SECTION
SCALE: 1:10



B ELEVATION - LOOKING NORTH
SCALE: 1:100



A PARTIAL ELEVATION - LOOKING EAST
SCALE: 1:100



DESIGNED BY: T. SHAW DRAWN BY: M. CAUDINO SCALE: AS NOTED DATE: 2023-03-06 CONSULTANT NO.: 694715-2000-450D-1003				CHECKED BY: S. NORSEWORTHY APPROVED BY: S. NORSEWORTHY ISSUED FOR CONSTRUCTION BY: M. SKINNER DATE: 2025/04/30			
00	ISSUED FOR TENDER AND CONSTRUCTION	2025/04/30	TS	SN			
NO.	REVISIONS	DATE	DESIGN	CHECK			

AtkinsRéalis 148 Nature Park Way, Winnipeg, Manitoba Canada R3P 0X7 204-786-8080				ENGINEER'S SEAL			
				THE CITY OF WINNIPEG WATER AND WASTE DEPARTMENT			
				MACLEAN PUMPING STATION CHLORINE SYSTEM UPGRADE MECHANICAL NEW WORK ROOF PLAN, ELEVATIONS AND DETAILS			
CITY DRAWING NUMBER 1-0630M-M0031				SHEET 001		REV. 00	SIZE A1